

Alphabet Match Game

Print this set of cards (Cardstock is better but typing paper will do).

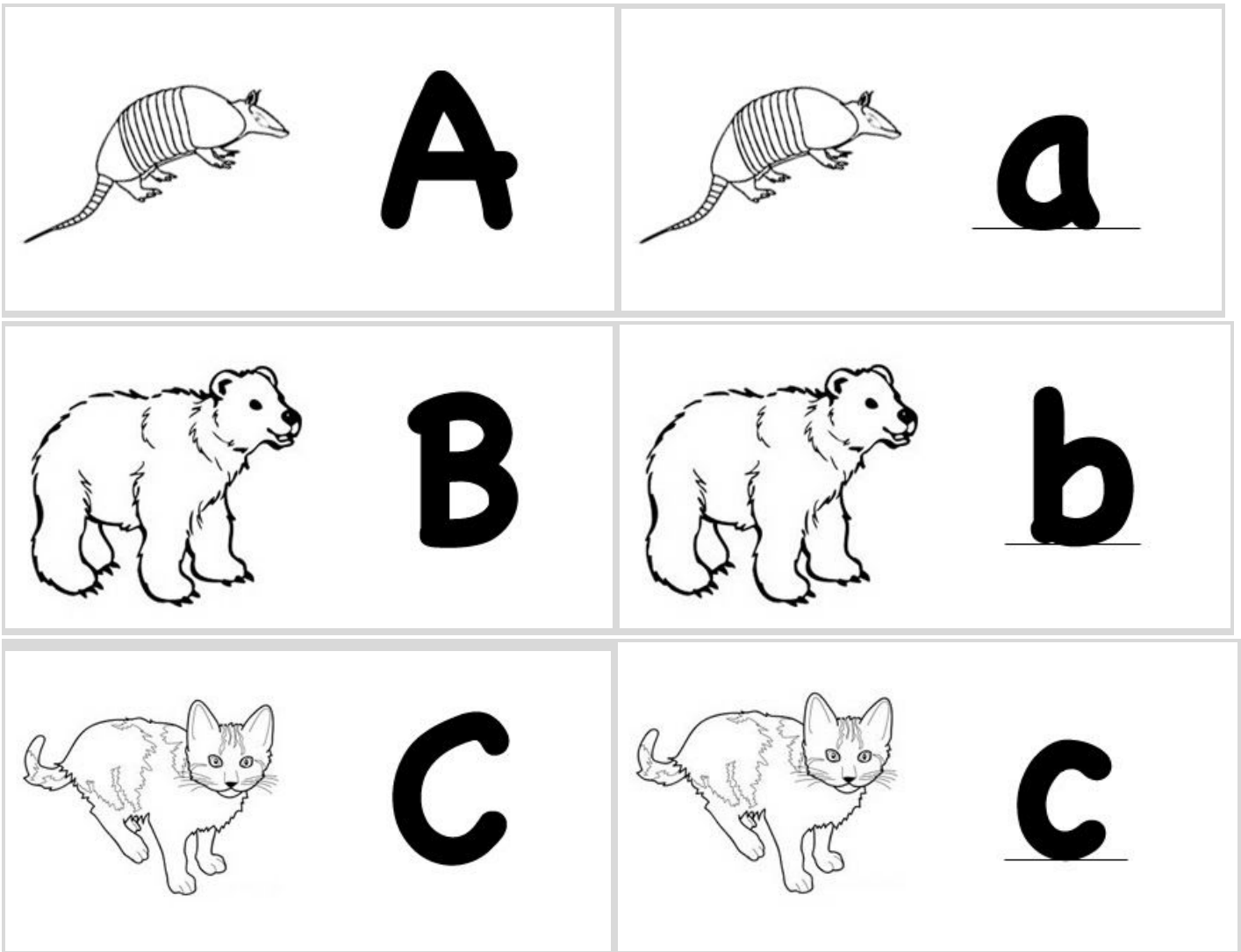
Cut out each card.

Fold each card in half to show the letter on one side and the animal on the other.

Lightly glue each card. Stack and weight the deck until it dries (i.e. make two or four stacks with a heavy book on top).

To Play Game:

Place all cards letter side up on a flat surface. Take turns flipping two cards to try to match the upper and lower case letters. Keep each matching pair of cards and go again. Player with the most matches wins.

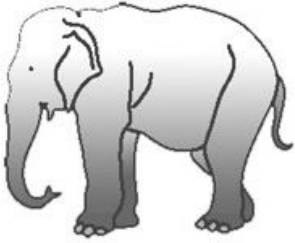




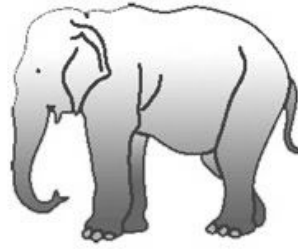
D



d



E



e



F



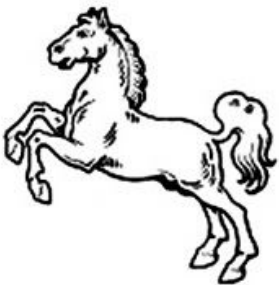
f



G



g



H



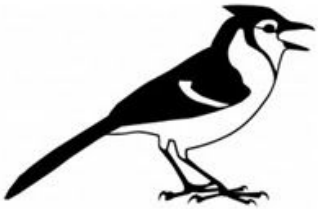
h



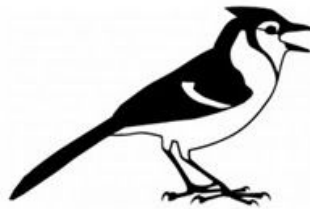
I



i



J



j



K



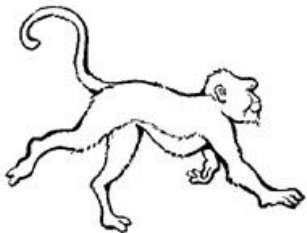
k



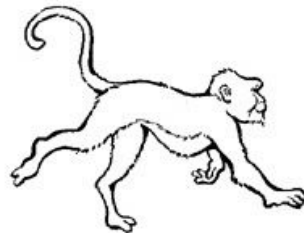
L



l



M



m



N



n



O



o



P



p



Q



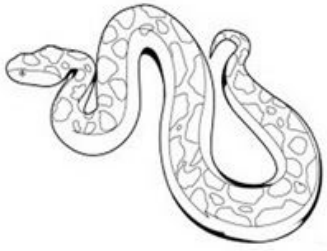
q



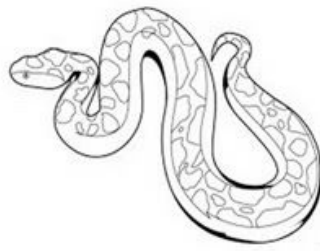
R



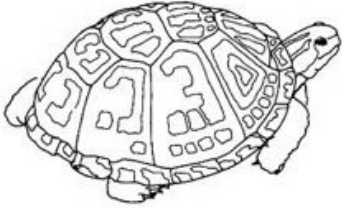
r



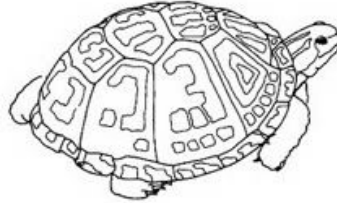
S



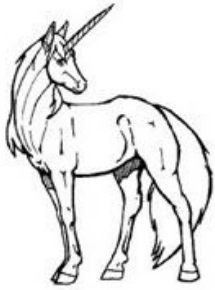
s



T



t



U



u



V



v



W



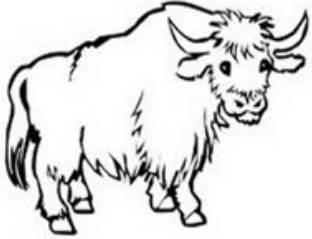
w



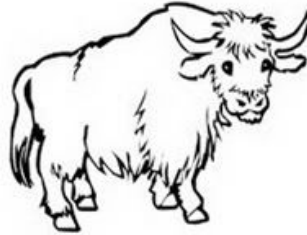
X



x



Y



y



Z



z